



## DEHYDRATED DE-EPITHELIALIZED AMNION-CHORION ALLOGRAFT MEMBRANE

### BUILT ON RESEARCH

BioXclude's use and efficacy in dentistry has been rigorously studied **since** its launch in **2010**, resulting in **more than 50 peer-reviewed clinical publications** to-date.

### PROVEN OUTCOMES

Documented **early healing potential** with **reliable bone and soft tissue outcomes** supported by clinical data.

### UNMATCHED VALUE

A highly **versatile** barrier membrane at an **affordable** price.

### SNOASIS MEDICAL'S PROPRIETARY PROCESSING

**Unique processing** supported by 12 peer-reviewed publications for the **highest quality and safety** manufacturing standards established by the **FDA** and **AATB**.



### APPLICATION VERSATILITY

Use **BioXclude wherever a reliable barrier membrane is needed**: socket preservation, dental implants, sinus augmentation and perforation, ridge augmentation, periodontal regeneration, non-surgical periodontal therapy, endodontic applications, and more.

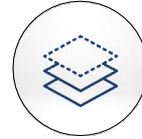
## THE HIGHEST QUALITY PROCESSING FOR THE HIGHEST QUALITY AMNION-CHORION MEMBRANE

BioXclude®'s proprietary processing is supported by 12 publications for the highest tissue quality and safety.



### GENTLE CLEANSING

- ▶ Gentle, detergent-free washing solutions
- ▶ Separation of amniotic sac to easily remove blood and debris



### DE-EPITHELIALIZATION

- ▶ Exposes underlying basement membrane for cell attachment
- ▶ Enables the membrane to be placed without concern for orientation



### DEHYDRATION

- ▶ Heated vacuum chamber removes water from tissues
- ▶ Avoids freeze-drying and cryoprotection agents

- ▶ **No Detergents**
- ▶ **No Cryoprotectant Additives**
- ▶ **No Freezing**

## BUILT ON RESEARCH

Committed to **results**, supported by **research**

## PIONEERING PLACENTAL MEMBRANE RESEARCH IN DENTISTRY

Snoasis Medical has pioneered the development and use of amnion-chorion membranes in **dental-oral maxillofacial surgery**. Rigorous scientific and clinical studies by independent clinicians and researchers have clearly shown that **BioXclude®** is **safe, effective, and versatile**.

**Over 50**  
**Peer-Reviewed Clinical**  
**BioXclude Publications**

## PROVEN OUTCOMES

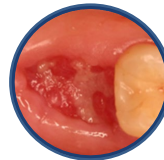
- Reliable Bone and Soft Tissue Outcomes
- Documented Early Healing
- Case Documentation Across Applications

### EARLY HEALING:

SOCKET PRESERVATION **WITHOUT** PRIMARY CLOSURE



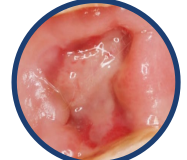
**3-day post-op**  
Dan Holtzclaw, DDS, MS



**4-day post-op**  
Dan Holtzclaw, DDS, MS



**10-day post-op**  
Matthew J. Fien, DDS



**2-week post-op**  
Dean Licenblat, BDent, MSc

## UNMATCHED VALUE

**UNWAIVERING DEDICATION**  
TO THE USE OF PLACENTAL MEMBRANES  
IN **DENTAL APPLICATIONS**



SNOASIS MEDICAL BRINGS  
**THE HIGHEST QUALITY**  
**AMNION-CHORION MEMBRANE**  
TO CLINICIANS



**ALWAYS AT AN**  
**AFFORDABLE**  
**PRICE**

## APPLICATION VERSATILITY

**EXPAND USE AND WITNESS**  
**IMPROVED CLINICAL OUTCOMES**  
**ACROSS APPLICATIONS**

- ▶ Site Preservation
- ▶ Immediate Implants
- ▶ Ridge Augmentation
- ▶ Periodontal Defects
- ▶ Peri-Implantitis
- ▶ Sinus Perforation
- ▶ Periodontal Pockets
- ▶ Gingival Recession
- ▶ Vital Pulp Therapy
- ▶ Wound Dressing

**SNOASIS**  
**MEDICAL**  
-BORN TO SMILE-

(866)521-8247

@SNOASISMEDICAL



WWW.SNOASISMEDICAL.COM

**ORDER NOW!**



PR092101v03